

# THE COMMUNITY BUILDING

The community building (hub) at Clay Park has planning permission for:

- A function room with kitchen for residents meetings and socials, as well as community events, private functions, and educational events (e.g. workshops)
- A small office for the CLT
- Shared laundry
- A guest room for residents family and friends, and visitors to Clay Park

Through community consultation, **you've made it clear that you see this as an important part of Clay Park**, both for the residents, the local community, and for visitors, and we agree. **However we don't currently have funding for the hub, and we may have to build something smaller.**

We are intending the hub will still be built of natural materials including straw bale, lime and cob.

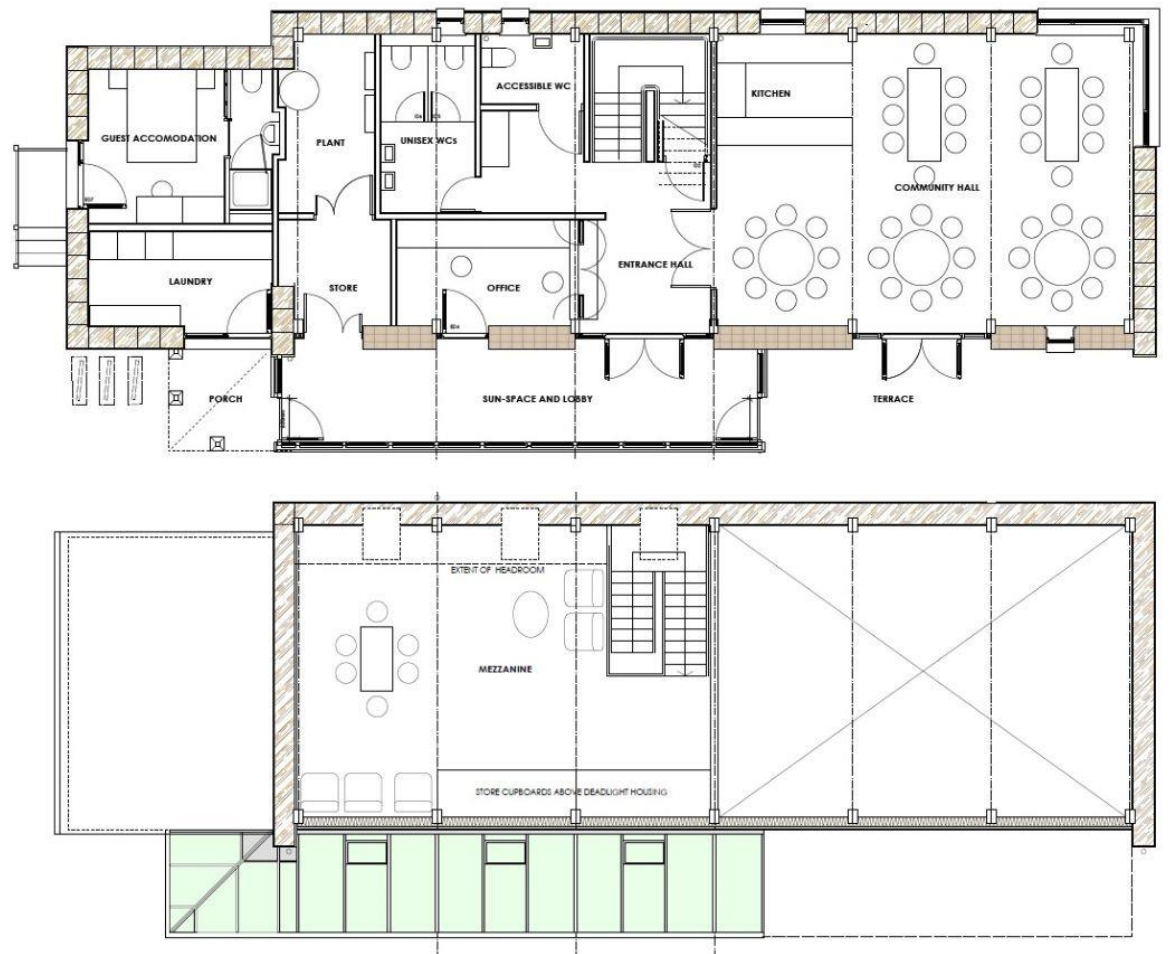
Exciting ideas for the hub include:

- Collaborating with Plymouth University's EU-funded CobBauge research project to incorporate a cob wall, using hemp fibre grown on the Dartington Estate
- Opportunities for the residents and local community to get involved with building the hub – "community build"
- Training/workshops/education for e.g. young people, construction professionals, people with learning disabilities, potential self-builders



## Funding ideas

- Grant funding for education & training and/or capital funding
- Loan finance against income from bookings
- Donations
- In kind support / non-monetary contributions / practical assistance



Function room in the common house at Forgebank, Lancaster co-housing. Facilities include laundry, guest rooms, children's room, food store, dining/function room with kitchen and WCs.



Common house (right) and communal outdoor space at Lilac co-housing, Leeds. Facilities include laundry, bike storage, outdoor seating, workshop, kitchen, dining room, office, meeting space, and WCs.