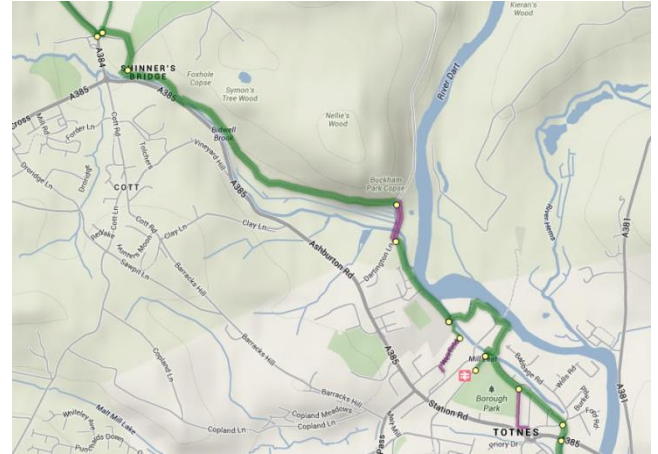




GREEN TRAVEL

Aims:

- Reduce the environmental impact of travel
- Demonstrate sustainable alternatives to cars
- Enable mobility for people without cars
- Help people live healthier lives by walking and cycling
- Enable residents to reduce transport costs



Means:

- Site gives good access to local facilities without car use
- Encourage cycle use by providing storage, maintenance area, low-cost loans for cycle purchase and shared electric bikes
- Discussions with Moor Cars and E-co Cars on a car share scheme, including electric cars with on-site charging
- Facilitate lift sharing
- Restricted parking on site for visitors and residents



Management:

- Transition Homes CLT and the residents will monitor and evaluate the travel plan annually with the aim of reducing travel related carbon emissions.